



Loyala Maurya Estates Pvt Ltd.

Corp Office:

501, 5th Floor, Park Plaza, Morabadi, Ranchi-834008

Sales Office:

601, 6th Floor, Park Plaza, Tagore Hill Road.
Morabadi, Ranchi, Jharkhand 834008

T: +91-651-2552683, 3551253, 2202153

E: admin@mauryahomes.in

E: support@loyalagroup.com

W: www.royalpalms.city

RERA no: JHARERA/PROJECT/101/2021



Live royally, live in luxury

rediscover

THE SERENE RANCHI





explore an unparalleled living experience amidst a pristine landscape.

The picturesque capital of Jharkhand welcomes you to experience an undeniable charm and a luxurious life at the most coveted locality.

“Build a life you don’t
Need a vacation from.”
Welcome to the abode of luxury





The grand LOCALE

Royal Palms is an ode to luxury and unmatched elegance where the location itself makes you feel proud.

 Airport -	7.5 km	 Project Bhawan -	9.0 km
 Railway Station -	7.0 km	 New IIM, Ranchi Campus -	2.0 km
 MG Road -	8.0 km	 Ranchi State Bus Depot -	6.5km
 New Vidhan Sabha -	7.5 km	 Argora Chowk -	4.0 km
 Jharkhand High Court -	8.0 km		



ROYAL PALMS

The gateway to finest living



Live with finesse


envisioned
&
built

WITH
ROYALTY
IN MIND




Indulge in the Lifestyle that you Deserve





"Life itself is a Privilege.
But to live life to the fullest
- well that is a choice"



Infinite
ways
**TO
FIND
HAPPINESS**

Life is a gift here

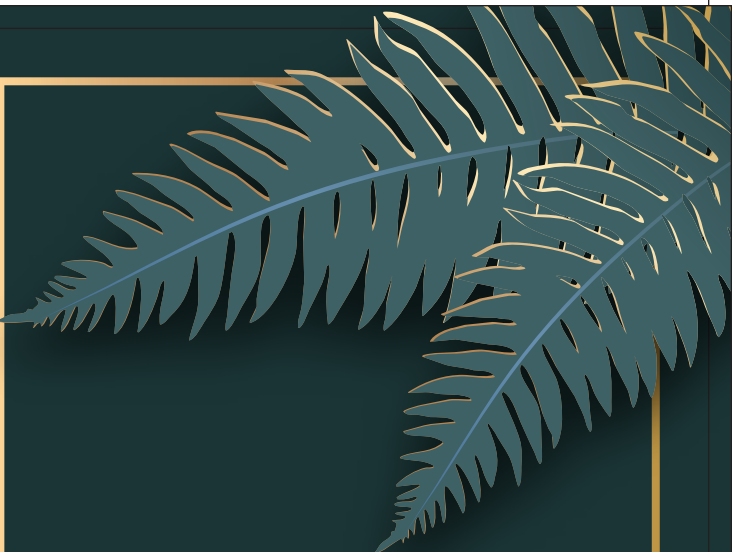
Go back to the days of your childhood when you play with your grandchildren. Indulge yourself in the fun that makes your happiness get redoubled.





Unlimited excitement awaits at Billiards Table

Whether you are a skilled player or not, playing billiards with friends keep your stress at bay. Be it weekend or an evening after a hectic day, reenergize your spirit with the excitement and fun of indoor games.

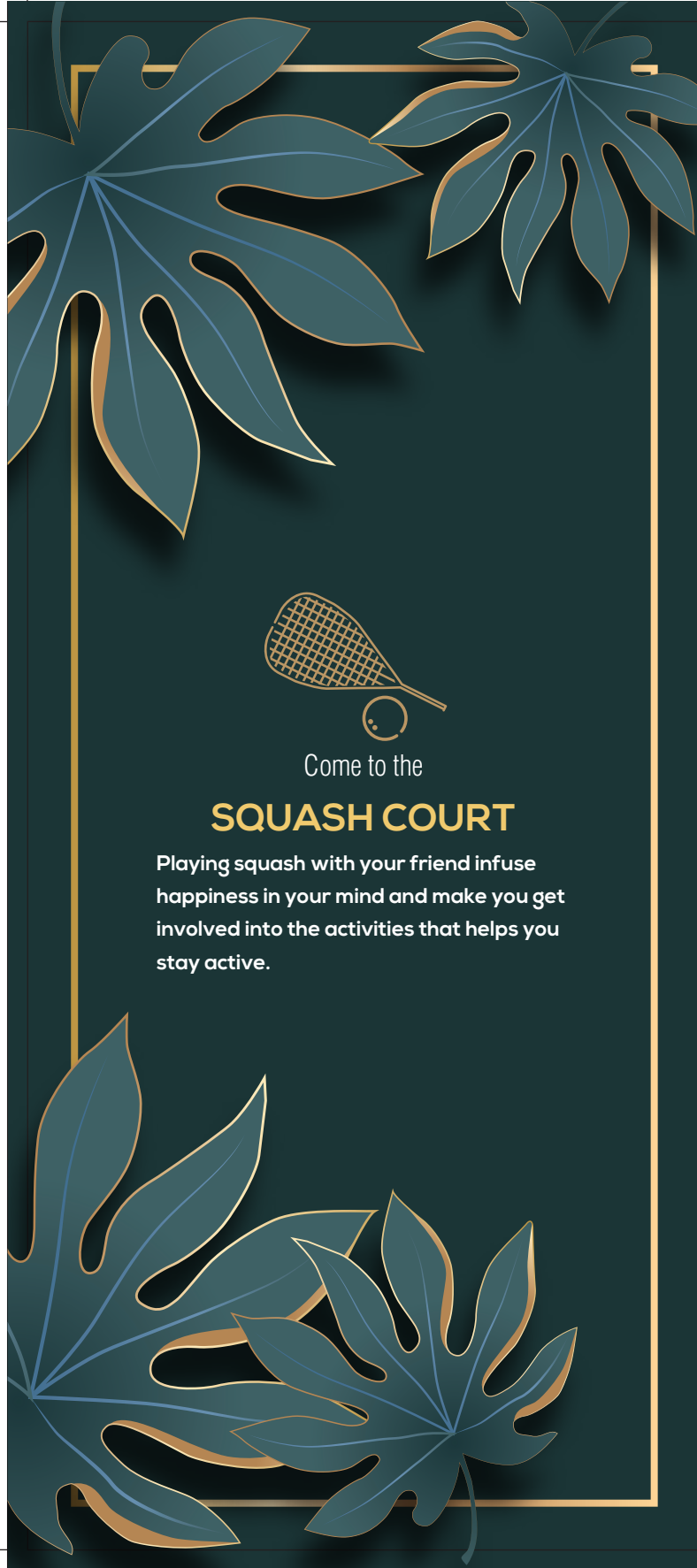


welcome to the world of

INDOOR GAMES

The indoor games room awaits with multiple games and activities. Let's indulge yourself with fun when you recall the memories of your childhood.



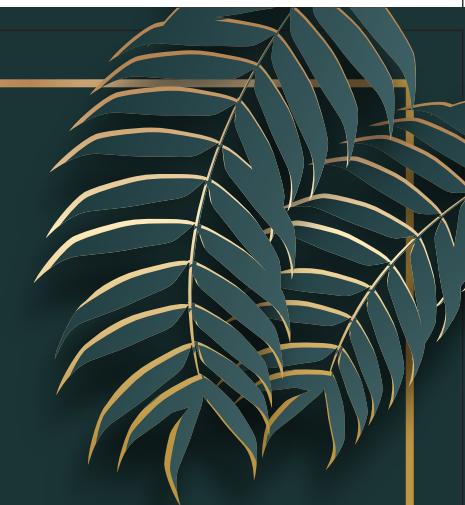


Come to the

SQUASH COURT

Playing squash with your friend infuse happiness in your mind and make you get involved into the activities that helps you stay active.

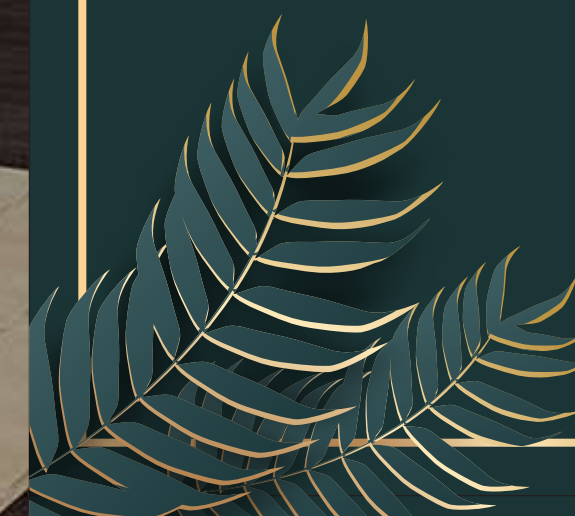




World-class

GYMNASIUM

A well-equipped gymnasium is built for your daily exercise. Perform your work out at the very own gymnasium of Royal Palms.





steam and

SAUNA ROOM

Keep your stress at bay while you relax and refresh yourself with Steam and Sauna Bath.





The Royal

BANQUET

Well-decorated banquet hall is designed to welcome your guests. Be it a birthday party or marriage anniversary, the banquet is all set for your gala day.



Wake up & Meditate

Breathe the fresh air in while listening to the soothing sound of birds. Feel the bliss of living amidst the serene nature where the greenery heals your tiredness. Won't it be a great beginning that acts as fuel for a long day?



delve into the

REALM OF COZINESS

Sit back and relax while enjoying the magnificent sight of the horizon. Let's immerse yourself in the vastness that surrounds you.

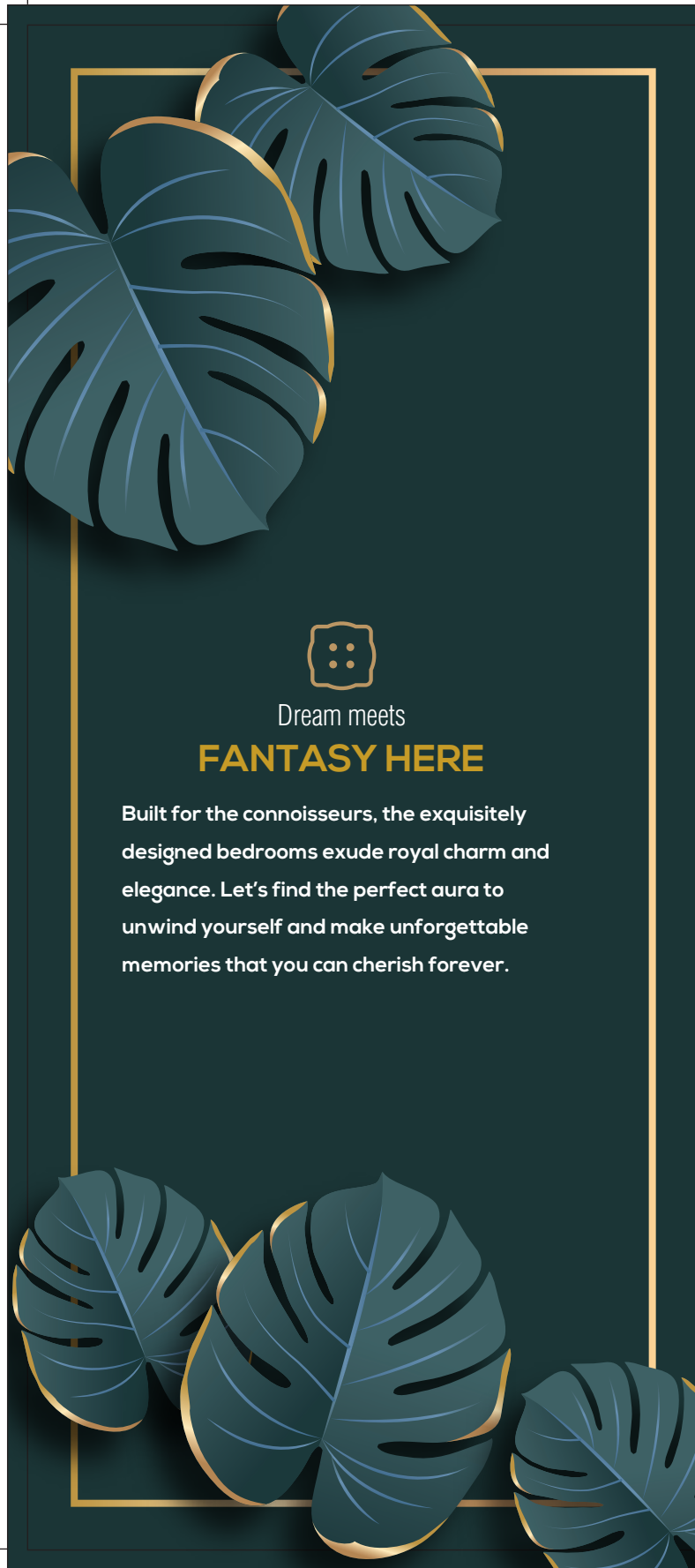




The royal

LIVING ROOM

Exclusively adorned living room complements your style of living and represents the majestic touch that is all around. The elite class decor, abundance of space and opulence make your guests get spellbound.

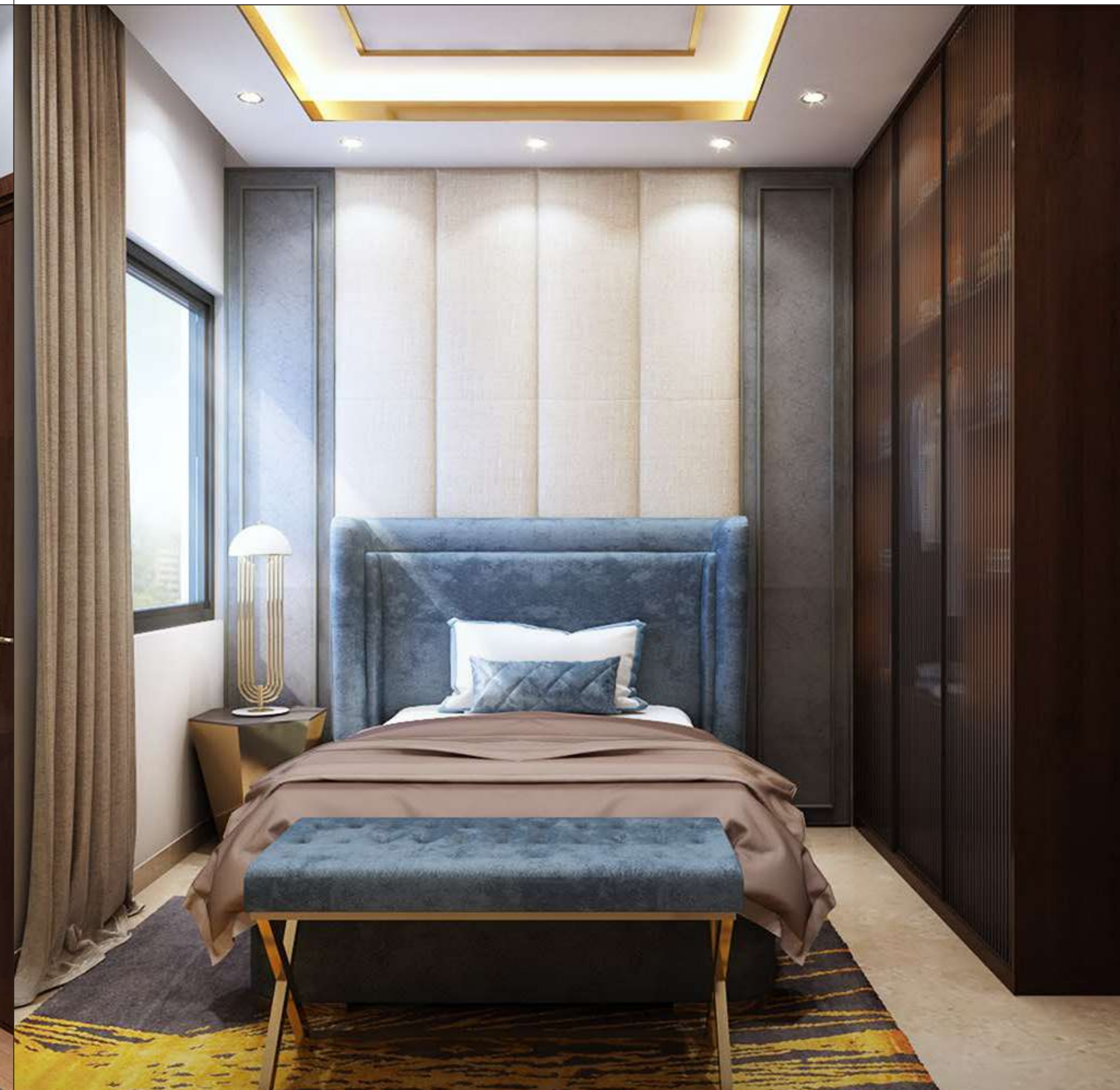


Dream meets

FANTASY HERE

Built for the connoisseurs, the exquisitely designed bedrooms exude royal charm and elegance. Let's find the perfect aura to unwind yourself and make unforgettable memories that you can cherish forever.





Guest rooms

DRAPED IN OPULENCE

Let your guests enjoy the charm of living in a royal suite. Let them experience the luxury that makes your possession a precious one.



the grand
LOBBY

Embellished with richness, the wide expansive
lobby is the reflection of grandeur.



An extraordinary living
AWAITS

Living is redefined here with the luxury
of space. Let's live a life that only a
few can possess.



The royal

AMENITIES

-  Elevators: 10 Passengers Elevators.
-  CCTV: 24hours CCTV Surveillance in Ground Floor Lobby & Parking Area.
-  Power Back-Up: 100% power back-up for common areas & services. 1KVA power back-up in each apartment.
-  Intercom: Voice communication between apartments & security guard room.
-  Fire Fighting: As per Fire Recommendation Letter.
-  Water: Water filtration plant to make water potable.
-  Swimming Pool with kids Pool
-  Club House Cum Lounge
-  Open Air Gym
-  Jogging Track
-  Senior Citizen Seating Area
-  Meditation Cum Yoga Deck
-  Kids Play Area

the royal

SPECIFICATIONS

- Structure
 - a) Structure : Compliant with Sesmic Zone – V specification
- Wall Finishes
 - a) Kitchen : Tiles (600mm high above counter), putty with primer
 - b) Toilet : Ceramic Tiles up to door height, putty with primer
 - c) Common Passage & Lobby: Putty with Primer.
 - d) Bedrooms: Putty with Primer.
 - e) Living Room/Dinning Room: Putty with Primer.
- Bathroom Fitting:
 - a) Sanitary Fittings: Parryware/Hindware/Cera or equivalent as per Model Flat.
 - b) C.P. Fittings: Ess Ess/Cera/Hindware or equivalent as per Model Flat.
 - c) Hot & Cold Water Line: Provision only in bath area.
 - d) Geyser: 16A point for Geyser in every Toilet.
 - e) Exhaust: 6A point for Exhaust in every toilet.
- Kitchen Fittings:
 - a) Sink: Stainless Steel Sink.
 - b) Electrical Provisions: Point for Aqua guard, Electrical Chimney, Microwave Oven & Refrigerator.
- Doors & Windows:
 - a) Main Door: Flush Doors.
 - b) Doors: Flush Doors.
 - c) Flush Doors: Anodized Aluminum Sliding.
- Flooring:
 - a) Bedroom: Vitrified Tiles.
 - b) Living Room/Dining Room: Vitrified Tiles.
 - c) Kitchen: Vitrified Tiles.
 - d) Toilet: Anti-Skid Tiles.
 - e) Common Passage & Lobby: Marble/Tiles/Kota.

The royal DEVELOPERS



Estd.in 1990 by Late Mr.Rahul Srivastava with a vision to empower everyone to luxury living at affordable pricing and creating benchmarks in the industry, Maurya Homes with Three Decades and counting has more than 4 Million Sq Ft. Space in development and has delivered 1500+ Happy Customers.

With Benchmark Quality, Customer Centric Approach, Robust Engineering,Uncompromising Business Ethics,Timeless Values and Transparency in all spheres of business conduct,Maurya Homes is now a Leading Real Estate Developer, Promoter and Builder in the region.

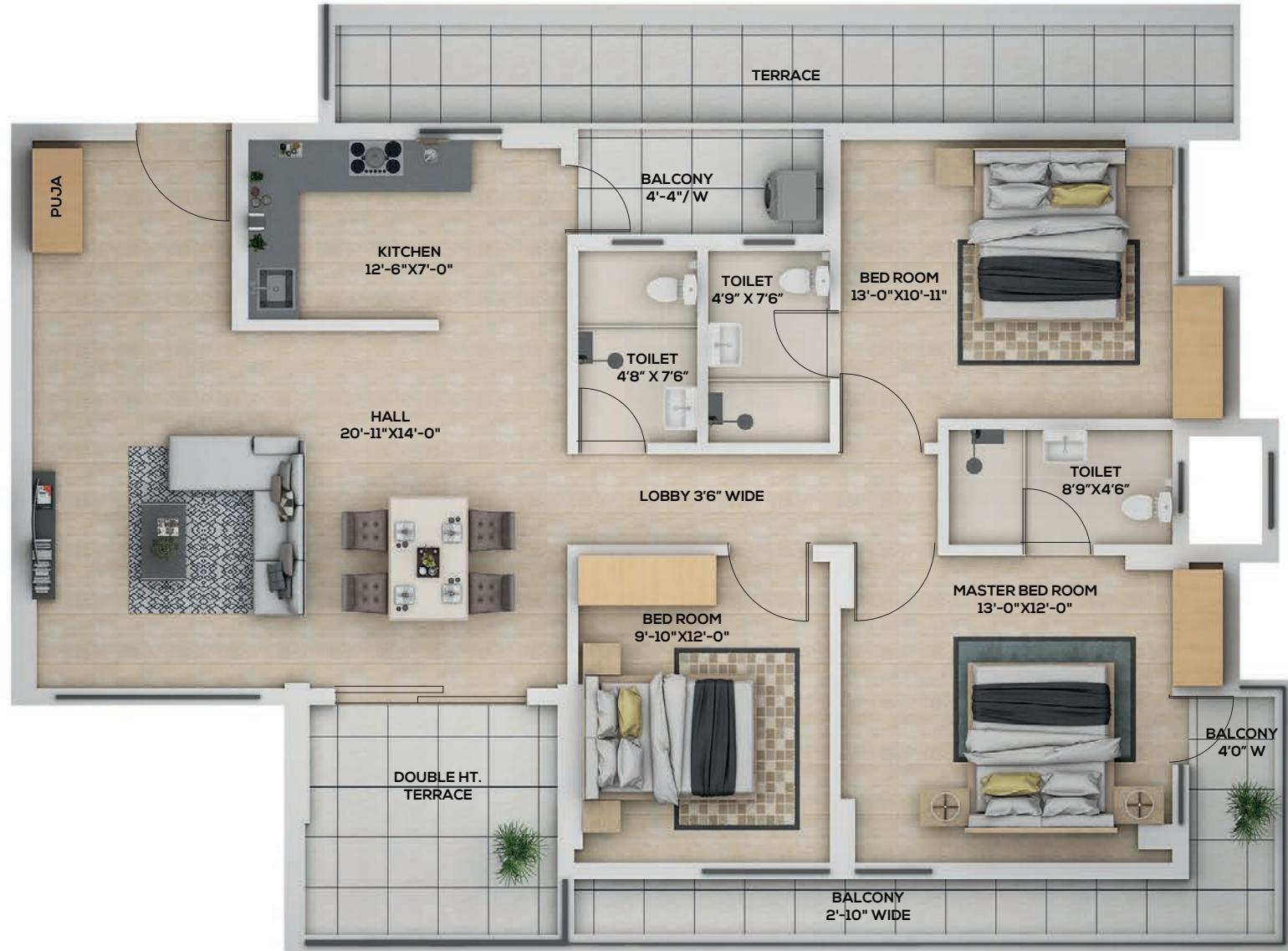
Our Eco-Friendly Projects with Sustainable Development and High Safety Standards is an example of Quality incorporating Perfection,Technology integrating Aesthetics and Passion resulting in Excellence. With Footprints in Residential,Commercial & Retail Segment, Maurya Homes over the year has diversified its business from Individual Villas & Row Houses to Luxury and Premium Apartments, from Plotted Development to Building Townships,and from High Street Marketing Complex to Plazas and Malls.



Loyala Group is a dynamic, and vibrant realty organization with lots of passion and burning ambitions. We have a strong presence in the real estate sector of Jharkhand, Bihar, and UP. Our passion is to build unmatched structures with ingenious designs, fresh ideas, beautiful aesthetics, high-end technology, and to raise the bar the way people live, work, and play. Our aim is not just to live up to our dreams, passions, or ambitions, it is also to cherish them. We have been pioneering in the real estate industry for one and half-decade and our essence is reflected in our work.

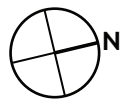
What we promise, we promise with our heart and soul. Our enjoyment lies in seeing it fulfilled to the fullest. When you get something extra to enjoy your life in a better way, we cherish those moments and with each added number of our smiling customers, the feelings grow stronger. Till date, we have over 6 million sqft of land assets and have fulfilled the dreams of more than 2500 happy families that motivate us for new innovation.

Block A and B- 1st Floor

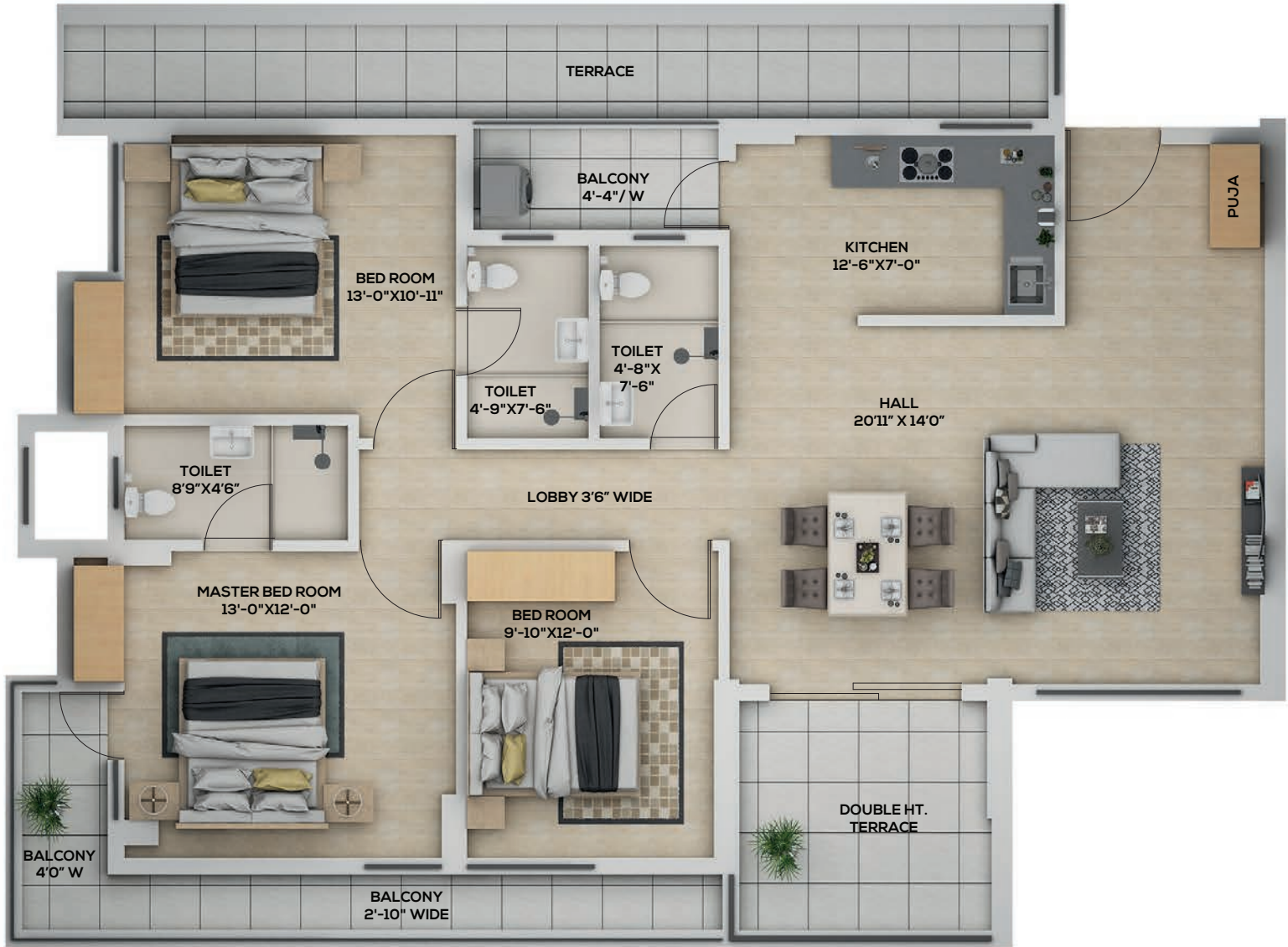


UNIT - 1

UNIT	FLAT	RERA CARPET AREA	TERRACE AREA	BUA	S.BUA
1	3BHK+3T	1090	260	1330	1940



Block A and B- 1st Floor



UNIT - 2

UNIT	FLAT	RERA CARPET AREA	TERRACE AREA	BUA	S.BUA
2	3BHK+3T	1090	260	1510	1940

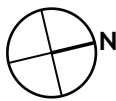


Block A and B- 1st Floor

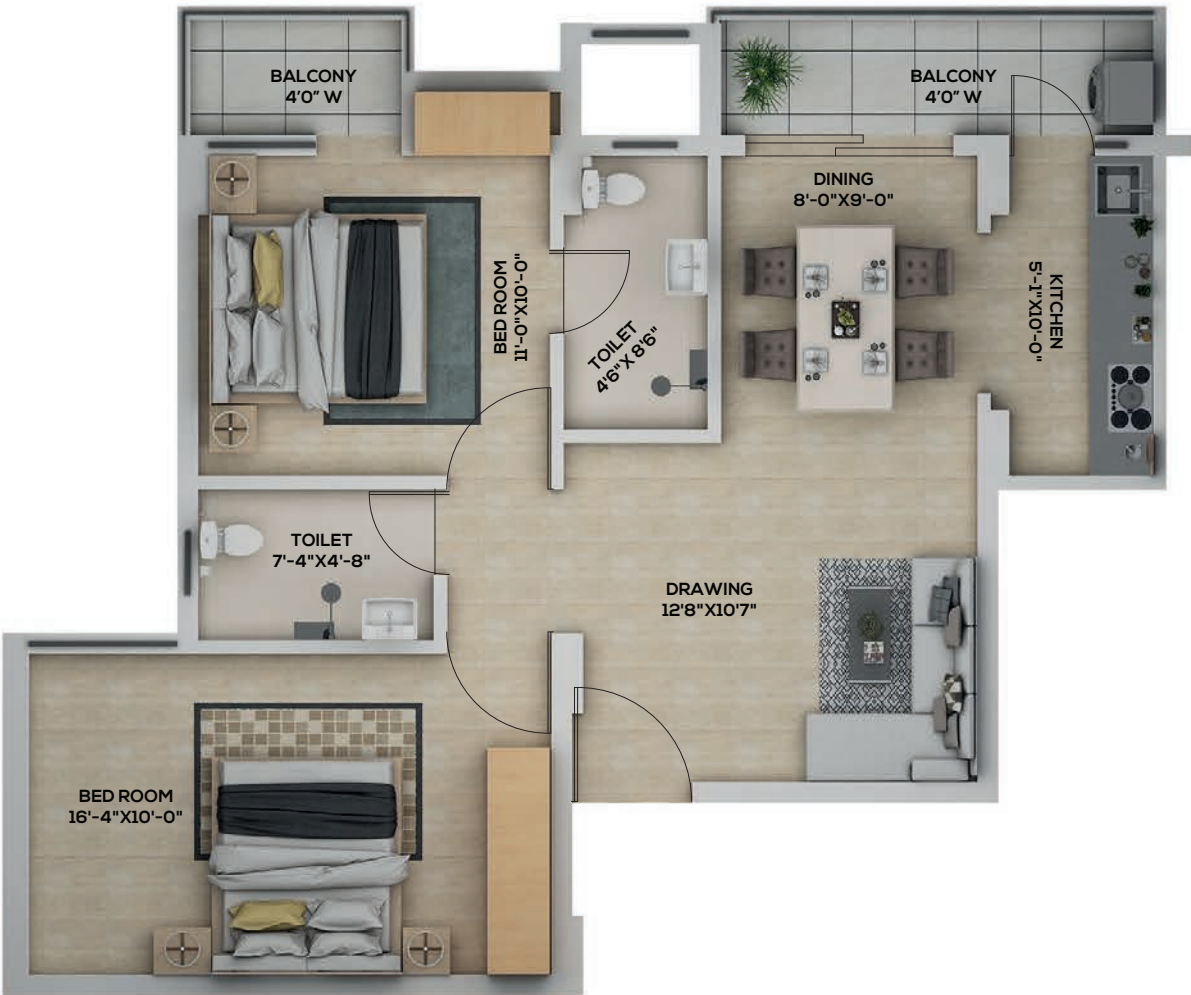


UNIT - 3

UNIT	FLAT	RERA CARPET AREA	TERRACE AREA	BUA	S.BUA
3	3BHK+3T	1090	260	1525	1840

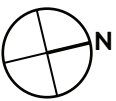


Block A and B - 1st to 8th Floor

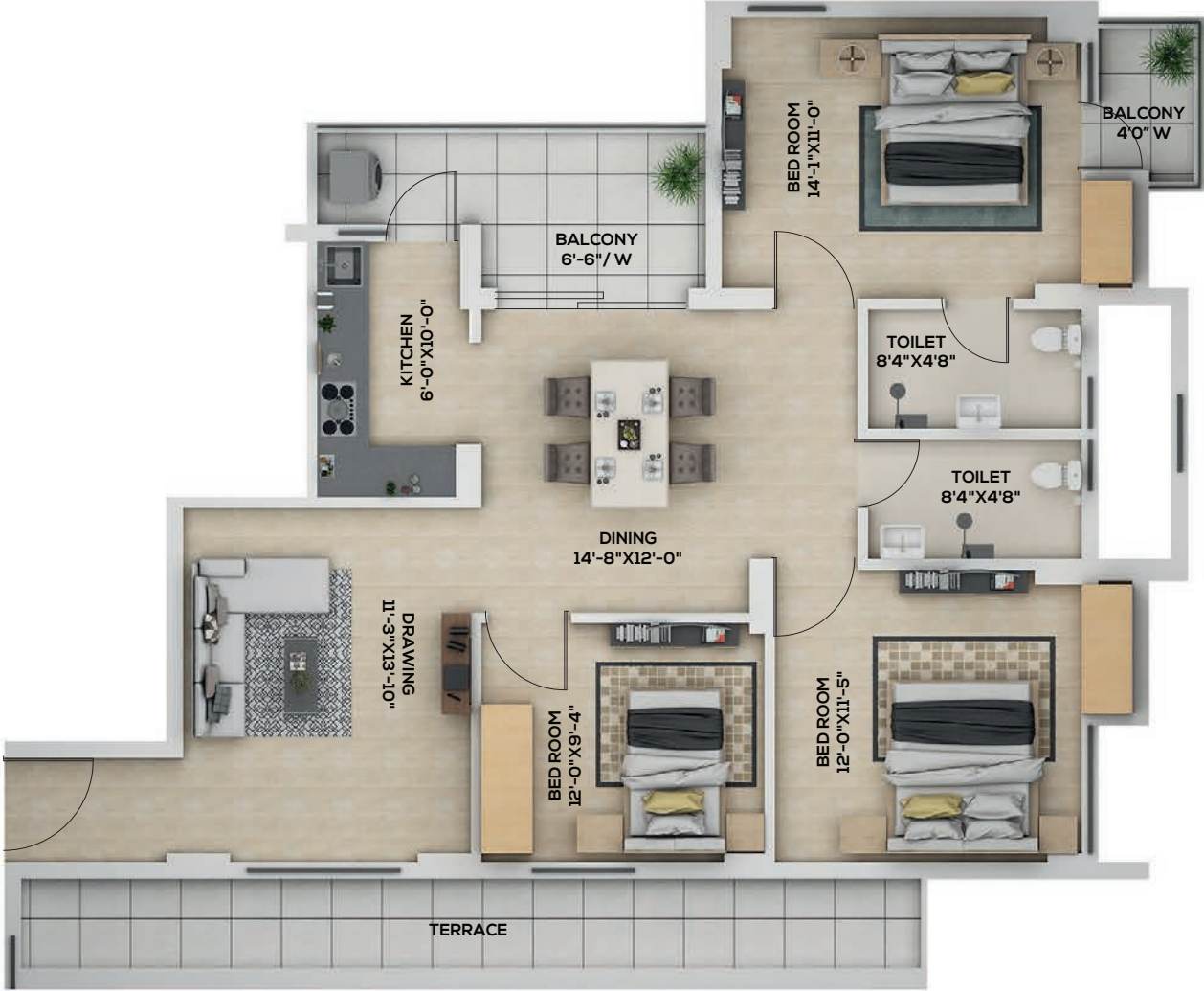


UNIT - 4

UNIT	FLAT	RERA CARPET AREA	TERRACE AREA	BUA	S.BUA
4	2BHK+2T	660	-	810	995

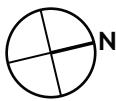


Block A and B- 1st Floor



UNIT - 5

UNIT	FLAT	RERA CARPET AREA	TERRACE AREA	BUA	S.BUA
5	3BHK+2T	945	125	1110	1440

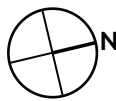


Block A and B - 2nd , 4th, 6th, 8th Floor

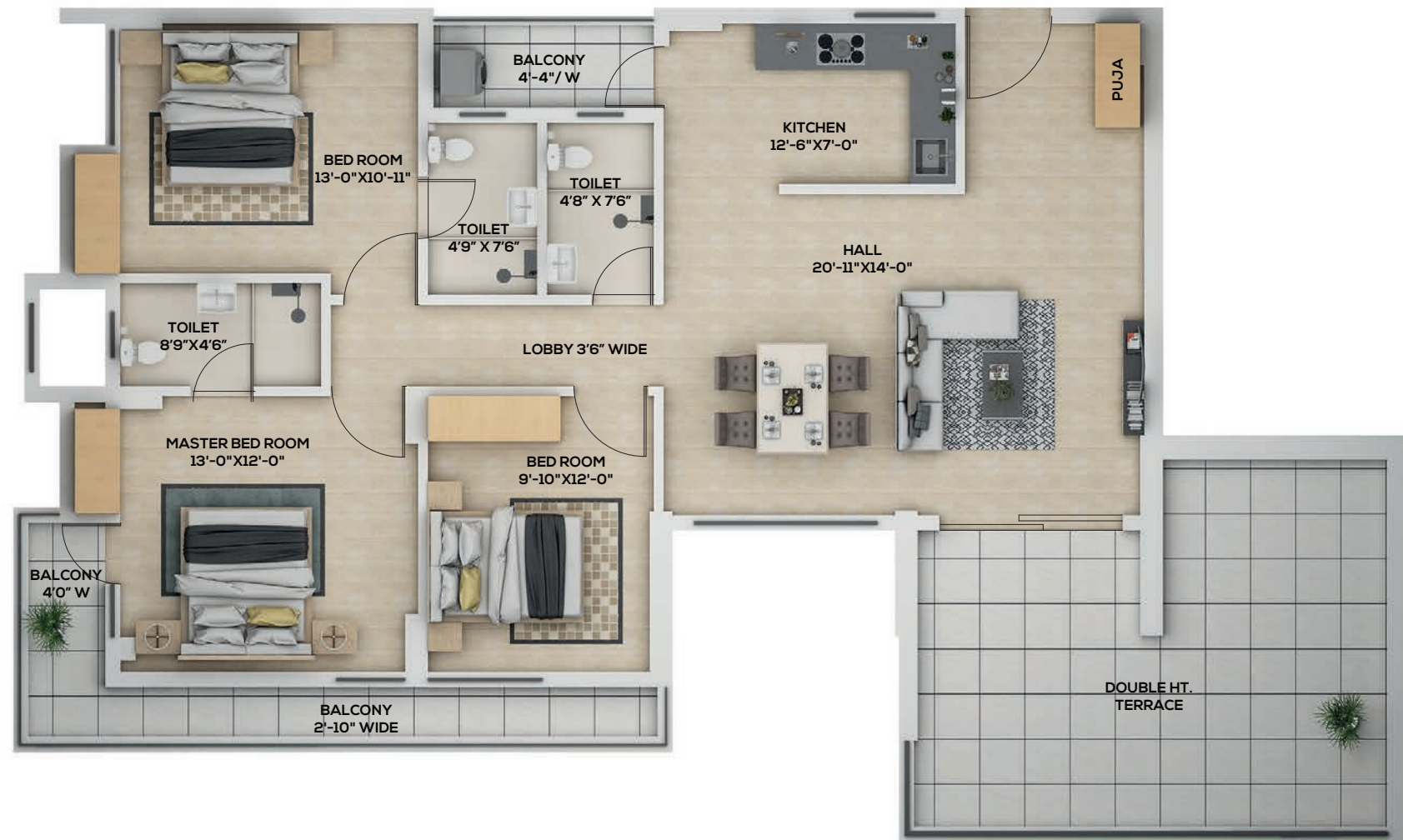


UNIT - 1

UNIT	FLAT	RERA CARPET AREA	TERRACE AREA	BUA	S.BUA
1	3BHK+3T	1090	330	1675	1995



Block A and B - 2nd , 4th, 6th, 8th Floor

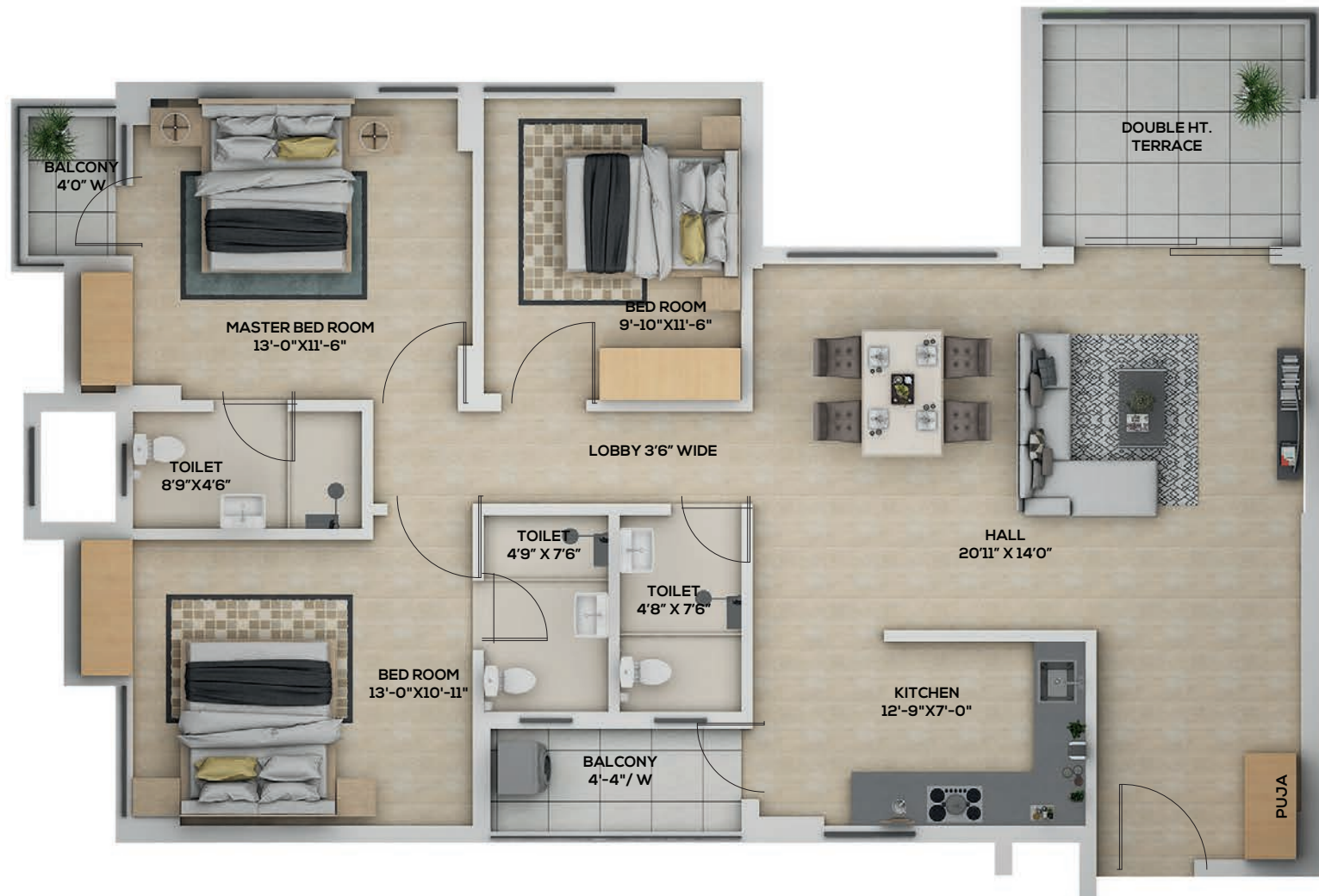


UNIT - 2

UNIT	FLAT	RERA CARPET AREA	TERRACE AREA	BUA	S.BUA
2	3BHK+3T	1090	330	1675	1995

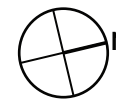


Block A and B - 2nd , 4th, 6th, 8th Floor

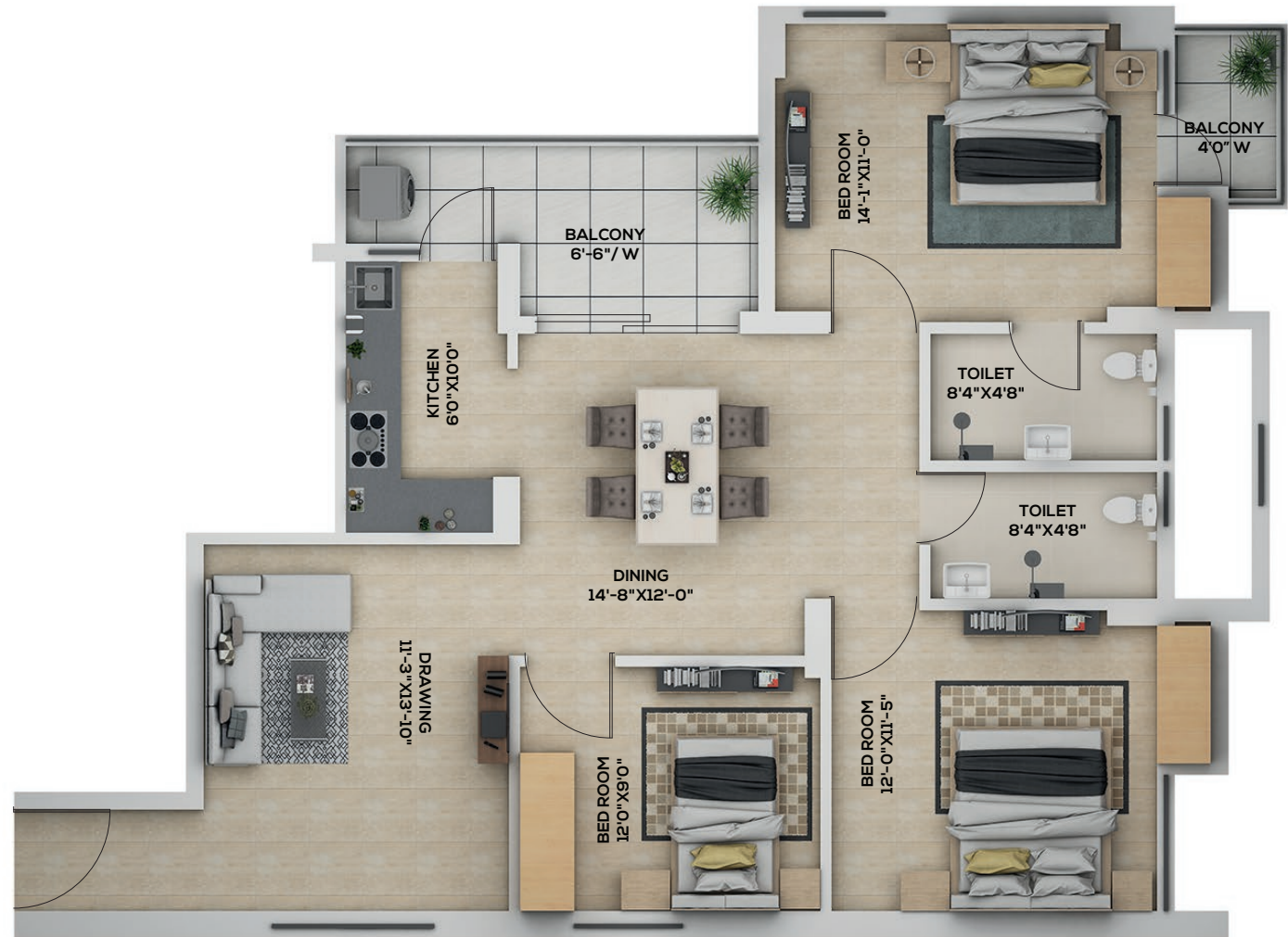


UNIT - 3

UNIT	FLAT	RERA CARPET AREA	TERRACE AREA	BUA	S.BUA
3	3BHK+3T	1090	110	1370	1660

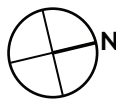


Block A and B - 2nd to 8th Floor

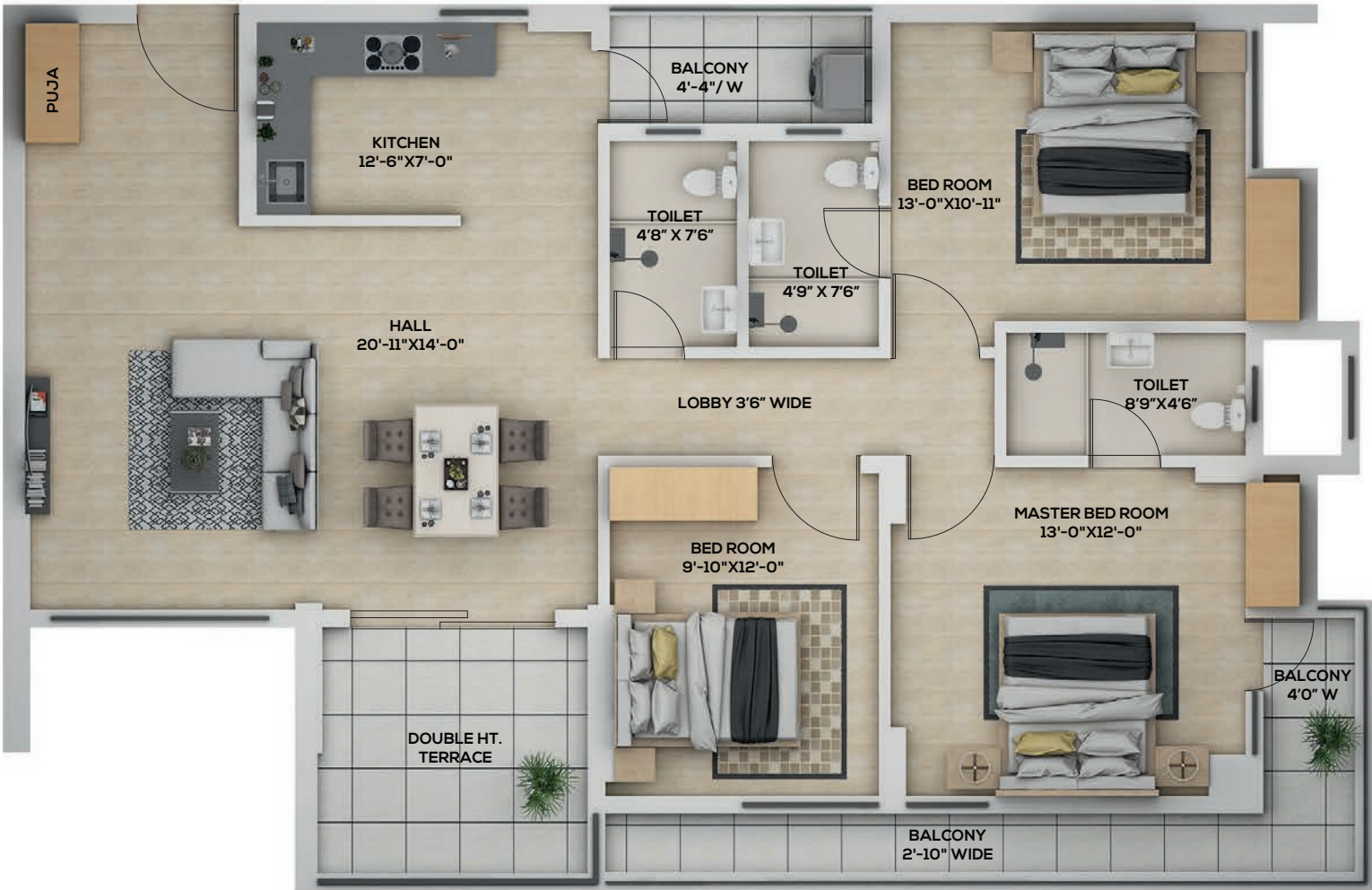


UNIT - 5

UNIT	FLAT	RERA CARPET AREA	TERRACE AREA	BUA	S.BUA
5	3BHK+2T	945	-	1150	1390

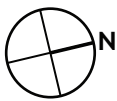


Block A and B - 3rd, 5th, 7th Floor

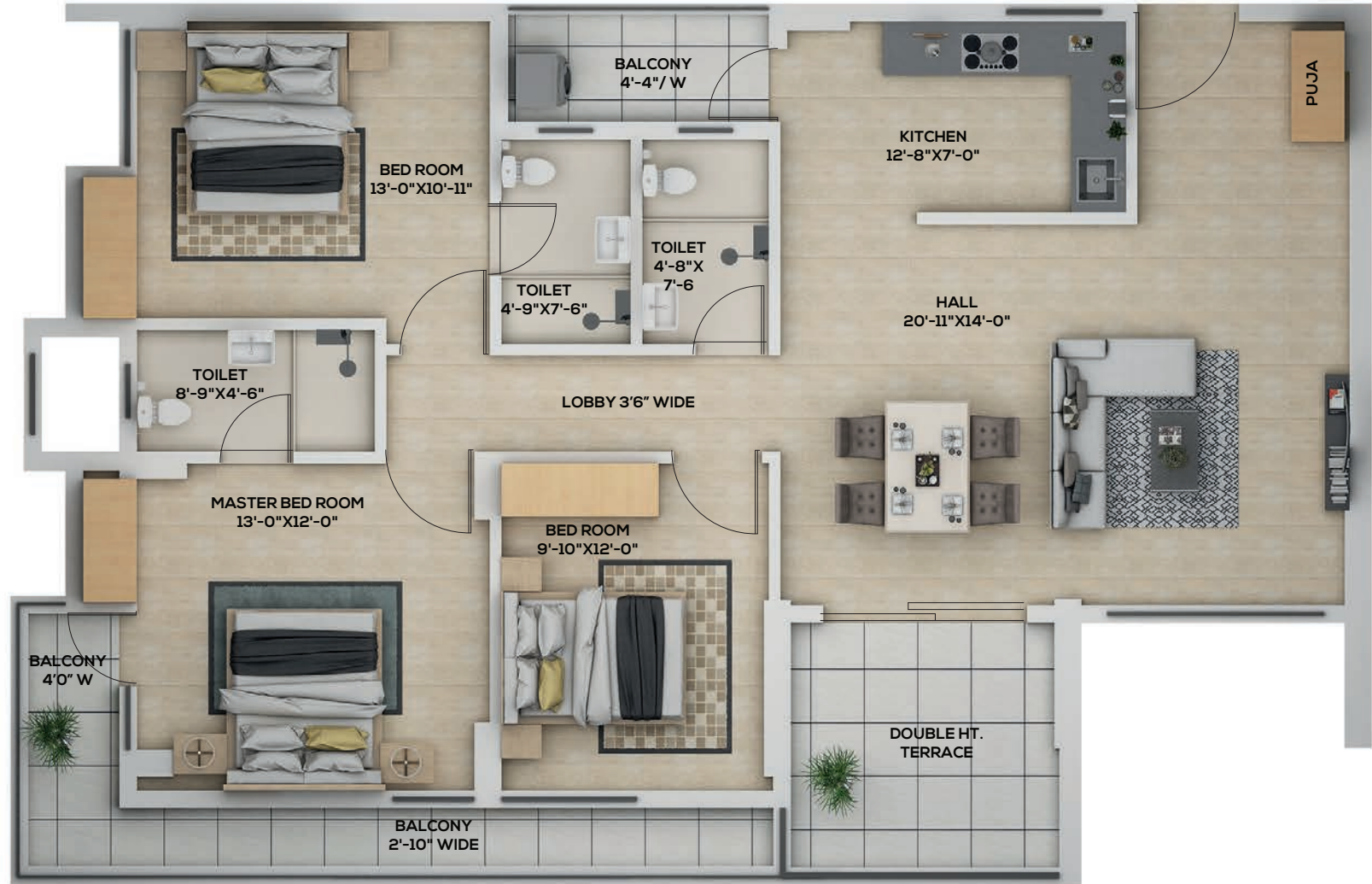


UNIT - 1

UNIT	FLAT	RERA CARPET AREA	TERRACE AREA	BUA	S.BUA
1	3BHK+3T	1090	105	1450	1750

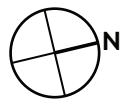


Block A and B - 3rd, 5th, 7th Floor

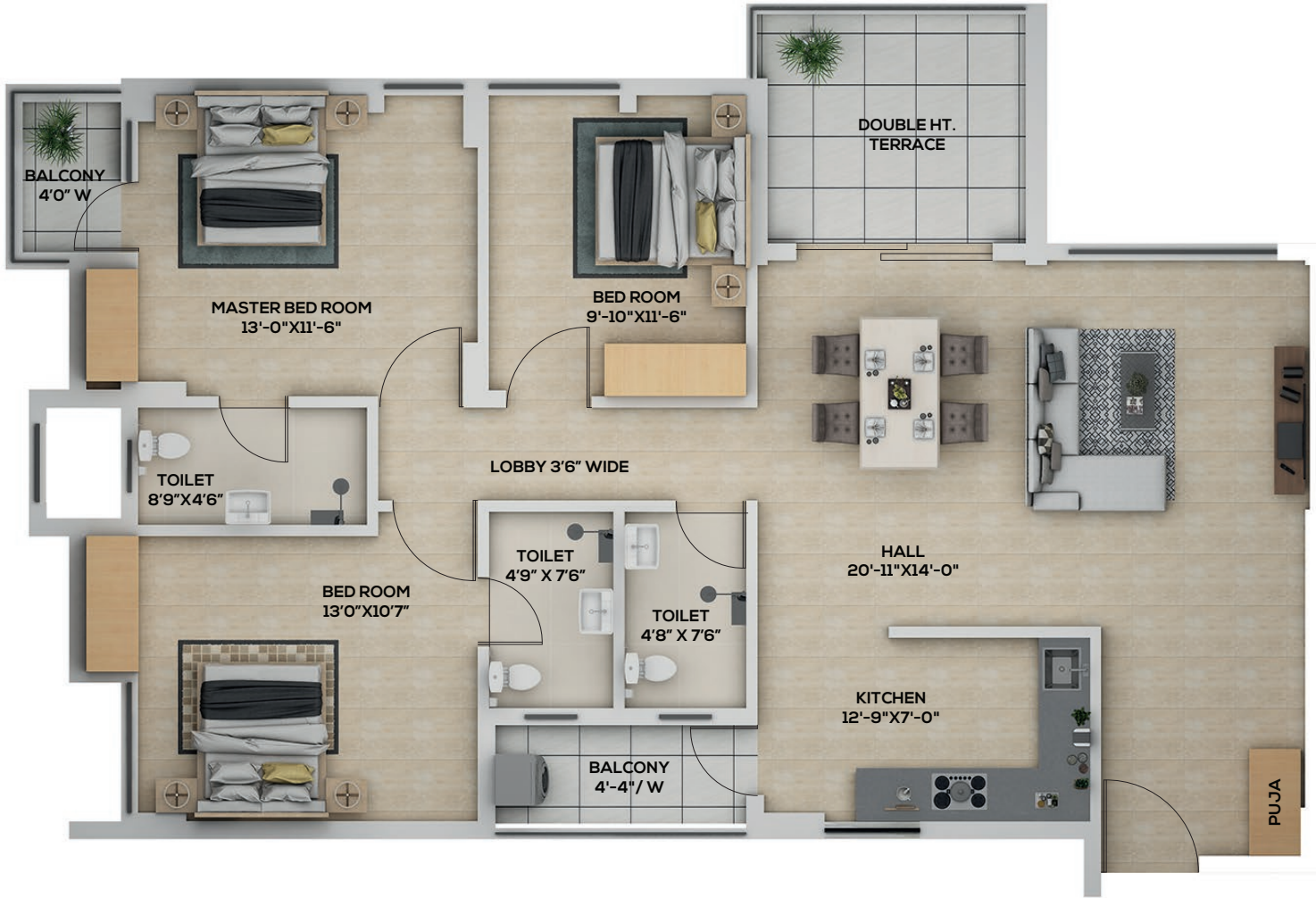


UNIT - 2

UNIT	FLAT	RERA CARPET AREA	TERRACE AREA	BUA	S.BUA
2	3BHK+3T	1090	105	1450	1750

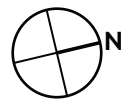


Block A and B - 3rd, 5th, 7th Floor



UNIT - 3

UNIT	FLAT	RERA CARPET AREA	TERRACE AREA	BUA	S.BUA
3	3BHK+3T	1090	110	1360	1660





Royal Palms

Where exquisiteness meets timeless elegance

Sprawling over more than an acre of land, Royal Palms is the upcoming iconic residential landmark of Ranchi. Resplendent with premium apartments, a lavish clubhouse, and modern amenities; it's an abode of your dream. Come and experience living in grandeur that you truly deserve.

